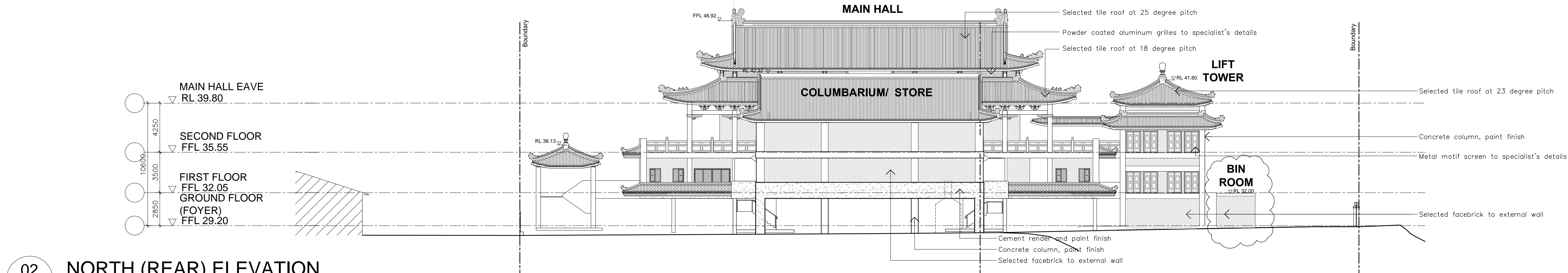
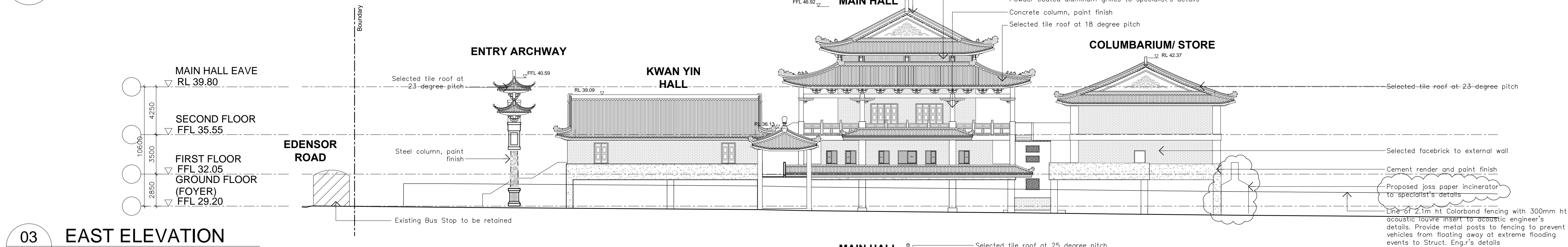


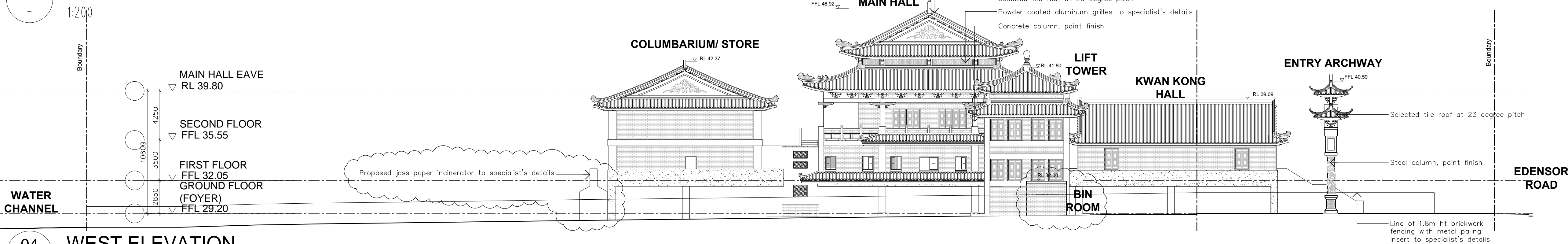
01 SOUTH (STREET) ELEVATION
1:200



02 NORTH (REAR) ELEVATION
1:200



03 EAST ELEVATION
1:200



04 WEST ELEVATION
1:200

DA SUBMISSION ONLY
NOT FOR CONSTRUCTION

NOTES:
This drawing is subject to copyright and may not be copied, used or reproduced in any way without the authority of VT Architects P/L.
DO NOT SCALE DRAWINGS. VERIFY ALL DIMENSIONS ON SITE.
Drawing title Abbreviations
SK - Sketch Design
DA - Development Application
CC - Construction Certificate
Copyright VT ARCHITECTS PTY. LTD. 2012

Date	Amendment	Rev.
05.10.12	Issue for DA Submission	A
28.02.13	Amendments as clouded	B

Consultants:
Surveyor:
John Lowe and Associates Pty Ltd
81 Elizabeth Drive Liverpool NSW 2170
Tel: (02) 9602 4582 Fax: (02) 9602 8324
Traffic Engineer:
Winning Traffic Solutions Pty Ltd
PO Box 4100 Denistown East NSW 2112
Tel: (02) 9807 9962 Fax: (02) 9807 9963
Stormwater Engineer:
Aztex Engineers Pty Ltd
9 Rawson Street, Lidcombe NSW 2141
Mobile: 0433 001 985

Consultants:
Acoustic Engineer:
Day Design Pty Ltd
Suite 17, 808 Forest Road Peakhurst NSW 2210
Tel: (02) 9584 2039 Fax: (02) 9584 2019
Landscape Architect:
Ray Fuggle & Associates Pty Ltd
Suite 17, 48 George Street Parramatta NSW 2150
Tel: (02) 9891 9222 Fax: (02) 9891 5844

Client:
THE AUSTRALIAN CHINESE
TEO CHEW ASSOCIATION INC.
澳洲潮州同鄉會
15 Park Road
Cabramatta NSW2166

Architect:
VT ARCHITECTS PTY LTD
PO Box 8, Regents Park BC,
NSW 2143 AUSTRALIA
26 Bolliks Street,
Cabramatta NSW 2166
T: (02) 9723 0999
F: (02) 9723 0990
E: info@vtarchitects.com.au
A.B.N. 24 083 968 183
Nom. Architect: Vinh Triang 6275
Website: www.vtarchitects.com.au

Project:
PROPOSED DEMOLITION OF EXISTING DWELLING.
PROPOSED PLACE OF PUBLIC WORSHIP
CONSISTING OF GROUND FLOOR CARPARK, A
PODIUM DECK WITH TWO ONE-STOREY BUILDINGS,
TWO TWO-STOREY BUILDINGS AND A LIFT/ STAIR
TOWER AND EXTERNAL SIGNAGE
47.51 Edensor Road
Cabramatta NSW 2166

Drawing Title:		
ELEVATIONS		
Date:	Drawn by:	Scale:
12.09.12	QC	1:200@A1
Drawing No:		Rev.
741 / DA / 102		B